

Somerset PTSA annual Fall Fundraising Drive to raise funds for the current school year is officially kicked off and runs through 10/4/2019. Instead of asking you to buy/sell items, PTSA is asking that you PLEASE make a direct donation to help us fund our programs for the whole school year. Remember that at Somerset we don't nickel and dime you by asking for payments for each individual field trip or enrichment activity. All the money raised by the PTSA goes straight back to teachers and students. Your donation is 100% tax deductible. Your support is CRITICAL to maintain and improve Somerset's highest quality academic, extracurricular and social programs. We need you to participate.

Suggested donation is at least \$200 per student attending Somerset Elementary.

Our goal is 100% participation. Donations in any amount are meaningful and appreciated.

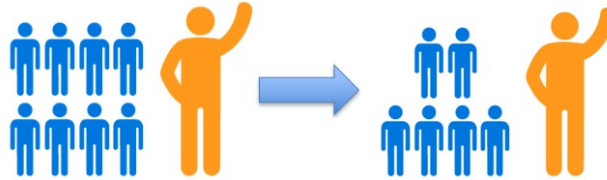
Why Donate?

In 2019-20 school year, Somerset PTSA will fund **over \$350 per student** to support their education (assuming 680 students in 2019-20):

Instructional Aides

\$150,000/ 680 students = \$220/student

- Hiring **six additional full-time teaching support** for all classrooms to allow teachers to focus more on individual need. **One more teaching staff per grade**
- Minimize the impact of large class sizes.
- Smaller classes lead to higher test scores and happier teachers

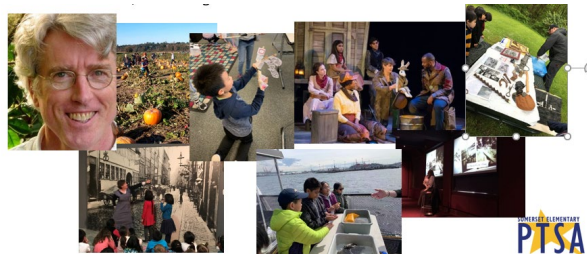


Curriculum Enhancement (Field Trips, Inhouse activities, Guest Speakers,,)

\$44,200/ 680 students = \$65/student

Somerset Elementary has the highest amount of enrichment programs in the district due to generous donations from parents, engaging teachers, and countless hours by volunteers to make it happen. Activities Highlights:

- Marine Science Afloat - hands-on scientific expedition boat trip
- Biz Town - a day-long visit to a simulated town to experience real world jobs
- Toymaker Visit "Solids and Liquids", "Sound and Light", and "Ideas and Inventions"
- Seattle Children's Theatre trip "Snow White" "Miraculous Journey of Edward Tulane"
- Pacific Science Center "Physics on Wheels Exhibit" and "Electric Magnets Workshop"
- Guest Speaker: Peter Donaldson "The Dramatic Story of Independence"
- Woodland Park Zoo "Learning Experience Program" And much more



School Supplies, Bookroom, Capital Equipment Enrichment Library Book Funds

35,000/ 680 students = \$51/ student

- Teacher Development, Music and Art Supplies. Bookroom Resources, Tech Equipment. Playground Equipment, etc.



Programs, Community Building Programs, Safety and Wellbeing

35,000/ 680 students = \$51/ student

Enrichment Programs/Club

Math Adventures
Chess Club
Young Authors/Poets
PBIS Programs (Positive Behavior Intervention Systems)
Passport Club (Geography)
School Garden
Art Imagination, Reflections (National Arts Program)
STEM Week
STEM Fair
Egg Drop
Engineering Night
Holiday Kids Marketplace
PhD program
Student Council Support

Safety and Well being

– Green Team
Safety Patrol
Hearing and Vision Checks
Drug and Alcohol Assembly (5th)
Internet Safety (4th & 5th)
Emergency Preparedness

Community Building Programs

Staff Appreciation Week
Festival of Cultures
Family Game and Movie Nights
Back-to-school Events
Walk to School day
Field Day
Talent Show
Pizza and Bingo Night
And much much more



7

How to Donate?

Donate online at: www.somersetptsa.org or look in your welcome back packets for the yellow fall fundraising brochure. On the back of that brochure, you will find a form that you can fill out and drop off with a check made payable to: *Somerset PTSA*. Please drop off forms and check in the PTSA mailbox located inside the school office.

Questions?

For more information about our Fall Fundraising Drive please go to www.somersetptsa.org or email us at somersetptsa@gmail.com Thank you for supporting your Alcott PTA! Your donations help to make Alcott a public school that provides a rich education for all its students.