

Somerset Strong News 1.29.2021

Somerset Families,

Happy Friday! This Somerset Strong newsletter will hopefully provide families clear communication regarding return to in-person learning schedules and information regarding the newly created Building Safety and Health Conditions Review Team. Thank you for your patience over the last week while Bellevue School District and the Bellevue Education Association (BEA) worked through a plan to provide a pathway forward to bringing students back to in-person learning safely. I recognize and acknowledge that communication over the last week was confusing and not as timely as many of us would have liked.

Schedule of Return to In-Person Learning from the new MOU

- Second Grade students will continue in-person services on Mondays, Tuesdays and Thursdays for the upcoming weeks. (see calendar on next page for specific dates)
- 1st grade students are scheduled to return for in-person services 2/8 and 2/9 in am/pm half day cohorts with remote instruction for the rest of that week.
- K students are scheduled to return for in-person instruction 2/11 and 2/12 in am/pm half day cohorts.
- The week of February 15-19 is Mid-winter break, there is no school for students.
- The week of February 22-26 all BSD students are remote in order to mitigate risk following a week-long school break. Classroom instruction will revert to allowing or quarantining.
- Please see visual calendar on next page for scheduled in-person learning dates for k-2 hybrid students.

Building Safety and Health Conditions Review Team:

A team has been formed at each school site providing grade-band in-person instruction in order to meet and review individual school safety and health data and make appropriate recommendations. This group shall meet each week prior to Wednesday at 3:00 pm and will review all relevant data including but not limited to: safety protocol reports, school infection and contact tracing data, and King County DOH COVID-19 dashboard data for their attendance area.

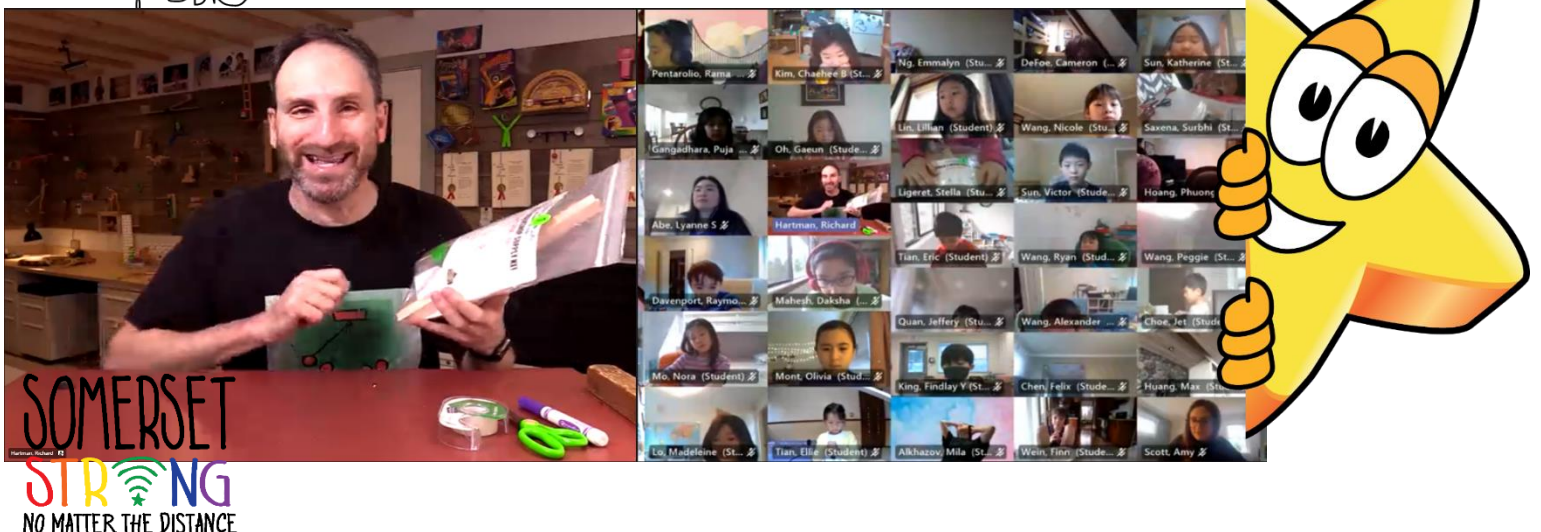
Please note that return dates are being evaluated by our Building Safety and Review Team weekly to determine it if is safe for Somerset to open on the selected dates. This team of staff members will have the responsibility for determining if we open on the stated dates or delay return. Families will be notified by the Bellevue School District of any decision to change the start date for a grade level by 5:00 pm on the Thursday before the scheduled return date.

This Week at Somerset

A special shout out to our PTSA who sponsors our Toymaker workshops at Somerset. This past week, our third-grade students were able to connect virtually with Rick Hartman, the toymaker, for an exciting and engaging learning opportunity. PTSA donations help to fund these curriculum enrichment experiences. PTSA is also promoting school pictures and a school yearbook. Please see below for more information and sign up for a time.

Brenda and I will host our monthly **Principal Connect** this Thursday at 10:30-11:15. It will be a simple Q&A session to address questions you might have related to your child's learning at Somerset. **Join on your computer or mobile app** [Click here to join the meeting](#) **Or call in (audio only)** [+1 206-800-4133,739149553#](tel:+12068004133739149553)

In partnership!



January				
Monday	Tuesday	Wednesday	Thursday	Friday
25	26	27	28	29
NO SCHOOL	Gr 2 In-Person Gr 1 Virtual Gr K Virtual	K-2 Virtual	Gr 2 In-Person Gr 1 Virtual Gr K Virtual	NO SCHOOL, Non-Student Day

February				
Monday	Tuesday	Wednesday	Thursday	Friday
1	2	3	4	5
Gr 2 In-Person Gr 1 Virtual Gr K Virtual	Gr 2 In-Person Gr 1 Virtual Gr K Virtual	K-2 Virtual	Gr 2 In-Person Gr 1 Asynch. Gr K Virtual	Gr 2 Virtual Gr 1 Asynch. Gr K Virtual
8	9	10	11	12
Gr 2 In-Person Gr 1 In-Person Gr K Asynch.	Gr 2 In-Person Gr 1 In-Person Gr K Asynch.	K-2 Virtual	Gr 2 In-Person Gr 1 Virtual Gr K In-Person	Gr 2 Virtual Gr 1 Virtual Gr K In-Person
15	16	17	18	19
NO SCHOOL Mid-Winter Break				
22	23	24	25	26
K-2 Virtual	K-2 Virtual	K-2 Virtual	K-2 Virtual	K-2 Virtual

March				
1	2	3	4	5
Gr 2 In-Person Gr 1 In-Person Gr K In-Person	Gr 2 In-Person Gr 1 In-Person Gr K In-Person	K-2 Virtual	Gr 2 In-Person Gr 1 In-Person Gr K In-Person	K-2 Virtual
8	9	10	11	12
Gr 2 In-Person Gr 1 In-Person Gr K In-Person	Gr 2 In-Person Gr 1 In-Person Gr K In-Person	K-2 Virtual	Gr 2 In-Person Gr 1 In-Person Gr K In-Person	K-2 Virtual
15	16	17	18	19
Gr 2 In-Person Gr 1 In-Person Gr K In-Person	Gr 2 In-Person Gr 1 In-Person Gr K In-Person	K-2 Virtual	Gr 2 In-Person Gr 1 In-Person Gr K In-Person	Gr 2 In-Person Gr 1 In-Person Gr K In-Person
22	23	24	25	26
Gr 2 In-Person Gr 1 In-Person Gr K In-Person	Gr 2 In-Person Gr 1 In-Person Gr K In-Person	K-2 Virtual	Gr 2 In-Person Gr 1 In-Person Gr K In-Person	Gr 2 In-Person Gr 1 In-Person Gr K In-Person
29	30	31		
Gr 2 In-Person Gr 1 In-Person Gr K In-Person	Gr 2 In-Person Gr 1 In-Person Gr K In-Person	K-2 Virtual		



Progress Reports



Elementary Progress Reports will be viewable to families on Parent Vue and Student Vue, in our learning management system after 8:00 pm on Friday, February 12th.

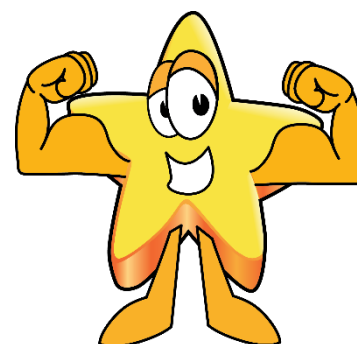
Please visit <https://bsd405.org/departments/district-technology/grades-attendance/> to log in or for details on how to activate and set up your account if you have not done so already.

Directions for families to access Elementary Progress Reports online: [English](#), [Spanish](#), [Chinese](#)

February School Spirit Day

The student council is promoting Crazy Hat/Hair day on Friday, February 26th. The class with the most participation will be recognized in the March assembly.

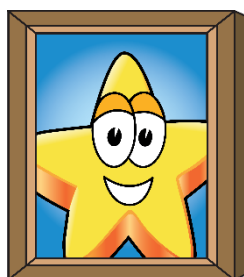
Hidden Talents



Hello Superstars!

You're invited to share your own hidden talent with our Somerset community. We'd love to see what you can do! Click on this link to record a video of ***your*** talent for a chance to see yourself featured in a future assembly (depending on how many clips are submitted, it may not be in the very next assembly): <https://flipgrid.com/05ed50df>

School Pictures



Lifetouch will be taking Somerset School Pictures following Safety Protocols. All Somerset students are welcome to come by the covered area on the playground to get their photo taken at their scheduled time. Students can have their photo taken even if they do not plan to purchase the prints. The picture will be included in the yearbook, student identification cards. In addition the pictures are uploaded in our Synergy data program and are extremely helpful to staff as they provide photo identification on our in-house data base.

Date and Hours: Wednesday, February 3rd, 12pm - 4pm

Registration: Please sign up for a slot using the sign up genius link <https://www.signupgenius.com/go/8050B48AEAA2AA46-somerset>. Please be certain to put your child's name/teacher/grade in the comments.

Ordering: If you would like to order pictures, please see the [Lifetouch flyer](#) for information.. We encourage all to pre-order pictures online [HERE](#) using code **EVTZC2T6G**.

Location: Somerset Elementary School (*under the covered basketball area outside, in the back of the school*)

Safety Protocols: We thank you in advance for following these:

- This will be an outside event. Dress for the weather.
- Students may be accompanied by 1 parent only. We ask that students go straight to the picture-taking area near the playground in the back of the school, following physical/social distancing guidelines. Staff will be available to assist students through the line. When your student has taken their picture, we ask that you do not stay on the school grounds/playground.
- All students and staff will be masked at all times—except for the short time that the student removes the mask to take a picture.
- Physical distancing is required.

Principal Birthday lunches – 12:30-1:00



February Birthday lunch celebration will be on February 24th at 12:30. Students with a February birthday will receive a Teams invite through their student email accounts from Ruth Embaye, our office manager on the day prior. If you don't receive an invitation, please reach out to embayer@bsd405.org and she will send the link. Each session includes an opportunity for students to share something exciting about birthdays, a quick art project and a short story. It is a highlight for us to share this time celebrating students. Please note we have moved the birthday lunch celebrations to Wednesday to ensure all students, both virtual and hybrid can attend.

UPCOMING IMPORTANT DATES

Feb 3	February Monthly Assembly 9:35
Feb 3	School Picture Day 12pm - 4pm
Feb 15-19	Mid-Winter Break-no school
Feb 24 F	February Principal Birthday Lunch
Feb 26	School Spirit Day-Crazy Hat/Hair day

For more information and important dates please follow this link to our Somerset PTSA: [Link to Somerset PTSA](#)

Pictures highlighting this week's 2nd grade return to in-person Learning

